

# Estrategias para una Construcción Industrializada, Circular y Certificada

LEED, BREEAM, WELL, DGNB, Passivhaus



COSENTINO CITY Barcelona



17 de abril, 10:30h COSENTINO City Barcelona

Inscripción gratuita: [www.bioeconomic.es](http://www.bioeconomic.es)

Presencial & Streaming





**INDRESMAT**<sup>®</sup>  
INDUSTRIAL RESINS & MATERIALS

# Redefining the thermal envelope of buildings with **Biobased Polyurethane**

Vincent Jamier — Business Development Manager



# Buildings are Europe's biggest climate problem

**>75%**

of existing buildings  
not energy-efficient

**39%**

of EU CO<sub>2</sub> emissions  
come from buildings

**>65%**

of energy loss caused  
by windows & envelope



# Thermal Energy loss through the building envelope



# One material. Multiple Solutions



# A complete renovation system — envelope + openings

## BIOPURETHANE® FOAMS

Thermal insulation for the full envelope



**0.022-35**

W/mK

Thermal  
conductivity

**Up 75%**

bio-based

Renewable  
raw materials

**-40°**

to +90°C

Working  
temperature

- ▶ Walls
- ▶ Roofs
- ▶ Floating floors
- ▶ Spray / injection

CE certified · In-certification (bioPUR)

## KLIMA-PUR® WINDOWS

bio-based window & door frames



**0.6-8**

W/m²K

Frame Uf  
(best in class)

**-50**

dB

Acoustic  
reduction

**35-40**

years

Lifespan

- ▶ Better than PVC · Better than timber
- ▶ No thermal bridges
- ▶ Minimal maintenance
- ▶ Passivhaus certified

Passivhaus certified · CE marked · Solar Impulse Label

# BIOPURethane<sup>®</sup> Foams: Breakthrough material at the core



**60–75% renewable raw materials**

Derived from vegetable oils — not fossil fuels



**Superior thermal performance**

Thermal conductivity 0.022 W/mK — top of market



**Circular by design**

Single material · Easy to repair, reuse & recycle



**40–60% lower carbon footprint**

vs conventional insulation materials

# KLIMA-PUR® Windows — Why it outperforms everything else



## CE Marked

EN 14351-1 · Ensatec certified · 2023



## Passivhaus Certified

Passive House Institute



## Solar Impulse Label

Profitable & environmentally efficient solution



## THERMAL PERFORMANCE COMPARISON

Frame width 69mm · Uf (W/m<sup>2</sup>K)

Aluminium		5.7
Alum. Thermal Break		3.2
PVC (5 chambers)		1.8
Hard Wood		1.5
Soft Wood		1.3
<b>KLIMA-PUR®</b>		<b>0.88</b>

Uf = 0.88 W/m<sup>2</sup>K · Best-in-class · 32% better than PVC

# Already proven pilots across Europe

42

End users

>410

Windows installed

13

Pilot buildings

7

EU countries

Castelldefels (ES) ✓



L'Atmetlla del Vallè (ES) ✓



Mallorca (ES) ✓



Gravenmoer (NL) ✓



Grenoble (FR) ✓



Ljubljana (SLO) ✓



Vilnius (LT) ✓



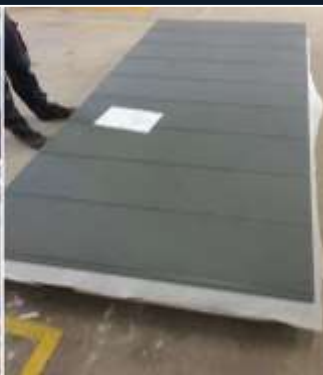
Milan (IT) ⚠



Burgas (BG) ⚠



# CASE STUDY: Industrialized renovation of complete façade



**Building type:**

**Single family residential (Vilnius, Lithuania)**

**Products used:**

**KLIMA-PUR® Windows + BIOPURethane® Foams (Sprayed)**

**Estimated cost:**

**Windows (14,500€) + Insulated Wooden Modules (45,700€)**

**Energy class improvement:**

**From E → B**

# The market & regulatory tailwind is strong



Renovation wave



Green mortgages



EPC uplift value



Taxonomy aligned

**500B€**

Energy Retrofits 2024  
(McKinsey)

**8%**

CAGR market growth  
2024–2028

**2030**

EU net-zero  
renovation deadline

**EPBD**

EU Energy Performance  
of Buildings Directive

# Let's renovate buildings together.

We are looking for partners across Europe



## Real estate owners & developers

Pilot bioPUR insulation or  
KLIMA-PUR windows in your  
next renovation project



## Energy consultants & advisors

Integrate our solutions in  
your EPC renovation  
recommendations



## Banks & public bodies

Support green mortgages  
or public renovation  
programmes with bioPUR

Vincent Jamier — Business Development Manager

INDRESMAT® · [www.indresmat.com](http://www.indresmat.com) · [www.klima-pur.eu](http://www.klima-pur.eu)

[info@indresmat.com](mailto:info@indresmat.com)

L'Hospitalet del Llobregat, Barcelona